

Scaled data based on original data using
LM-79-08 Approved Method: Electrical and Photometric Measurements of Solid-
State Lighting Products

Test Report Prepared for
Cooper Lighting Solutions
(formerly Eaton)

Brand: INVUE

Report Number: P149358

Luminaire Tested: **VWM-E02-LED-E1-SL2-HSS-8030**

Issue Date: 03/03/2020

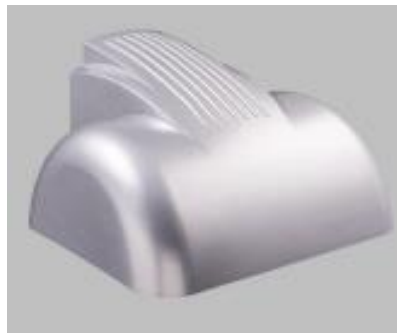
Test Information

Test Method: LM-79-08
Report Number: P149358
REPORT IS SCALED FROM IESNA LM-79-08 TEST DATA (P33726)
Test Lab: INNOVATION CENTER-P3
Issue Date: 03/03/2020
Manufacturer: COOPER LIGHTING SOLUTIONS (FORMERLY EATON)
Product Line: INVUE
Catalog Number: VWM-E02-LED-E1-SL2-HSS-8030
Description: VISION WALL MEDIUM LED LUMINAIRE
(2) LIGHTBARS WITH AccuLED OPTICS - TYPE 2 W/ SPILL LIGHT CONTROL AND HOUSE SIDE SHIELD
Light Source: (42) 3000K CCT, 80 CRI LEDs
Ballast/Driver: -

Summary

Lumens per Lamp: N/A
Luminaire Lumens: 3095.1 lumens
Efficiency: N/A
Efficacy: 59.4 lumens/watt
Luminous Opening: Rectangular (W 0.33' x L: 1' x H: 0')
IES Classification: Type II - Short - Non-Cutoff
BUG Rating: B0 - U0 - G1

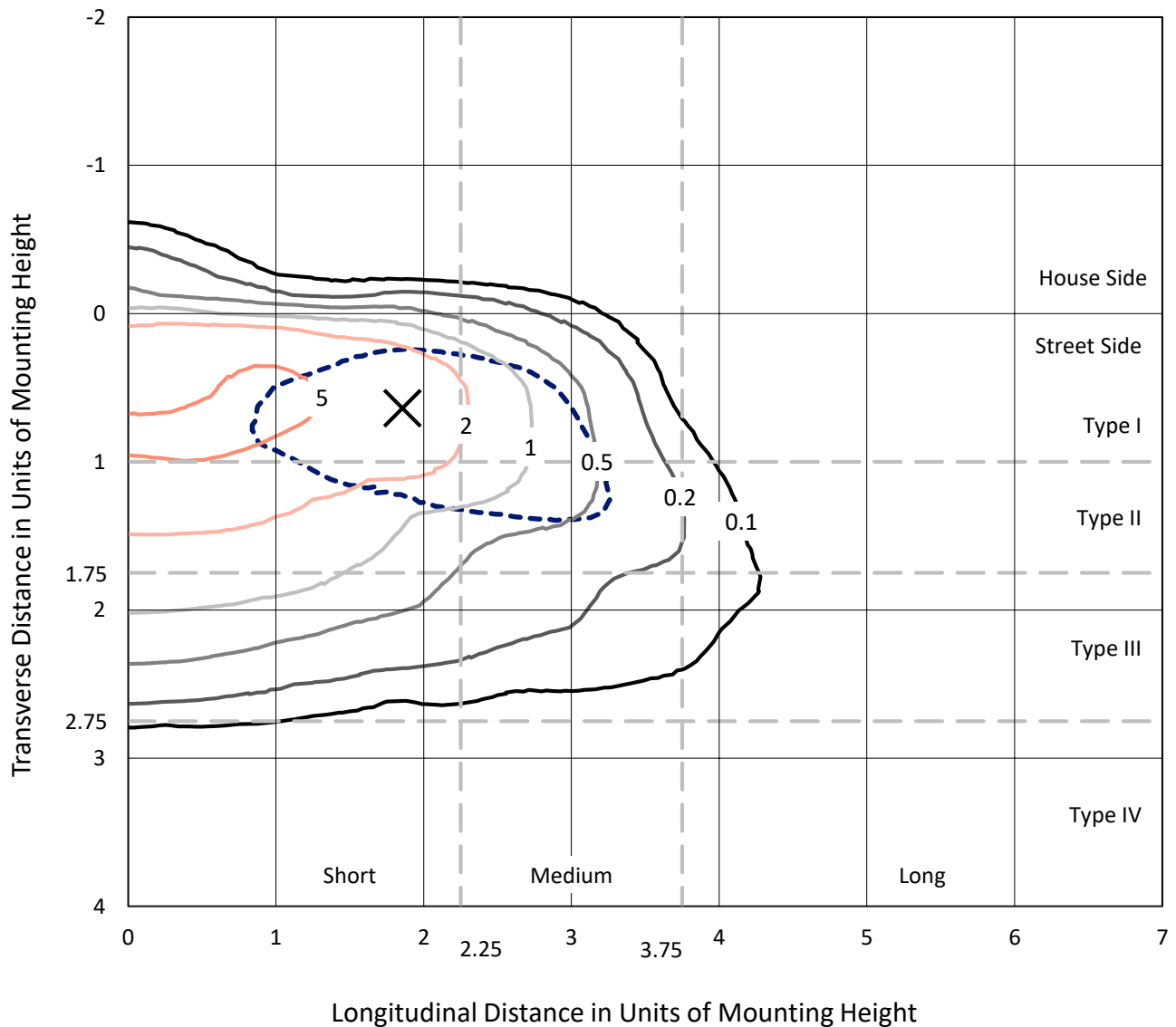
Input Watts (W): 52.1
Input Voltage (V): NR
Input Current (Ain): NR
Voltage Rise (V): NR
Power Factor: NR
Total Harmonic Distortion (THDi): NR
Frequency (hertz): 60
Stabilization Time: NR
Operation Time: NR
Ambient Temperature (°C): NR
Test Distance: 25 FT



REPORT NUMBER: P149358
 CATALOG NUMBER: VWM-E02-LED-E1-SL2-HSS-8030

Iso-Footcandle Lines of Horizontal Illumination

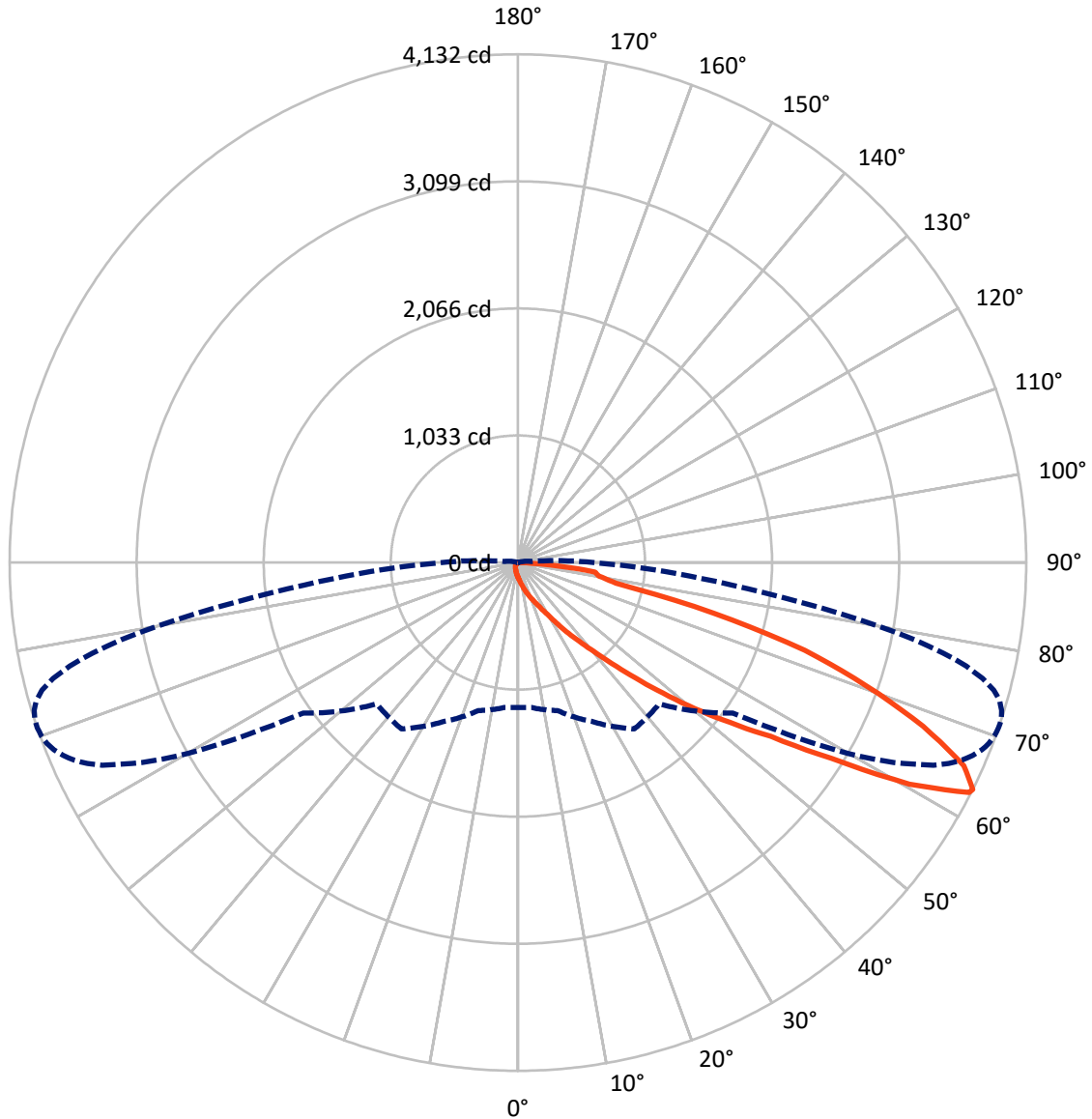
× Max cd
 - - - 1/2 Max cd



Based on 10 foot mounting height. Maximum calculated value = 6.5 fc
 Type II - Short - Non-Cutoff

REPORT NUMBER: P149358
CATALOG NUMBER: VWM-E02-LED-E1-SL2-HSS-8030

Luminous Intensity Polar Plot



— Vertical Plane Through 71-Deg Lateral - - - Horizontal Cone Through 63-Deg Vertical

REPORT NUMBER: P149358

CATALOG NUMBER: VWM-E02-LED-E1-SL2-HSS-8030

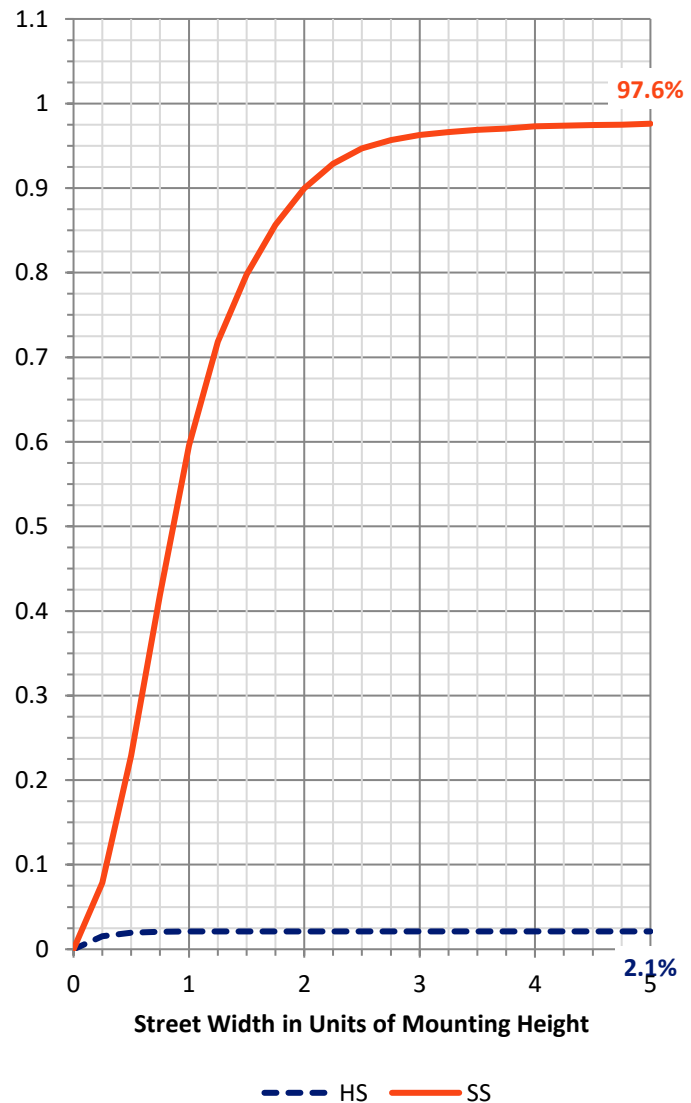
FLUX DISTRIBUTION:

		Downward	Upward	Total
House Side	Lumens	65.7	0.0	65.7
	% Fixture	2.1	0.0	2.1
Street Side	Lumens	3029.3	0.0	3029.3
	% Fixture	97.9	0.0	97.9
Total	Lumens	3095.1	0.0	3095.1
	% Fixture	100.0	0.0	100.0

Coefficient of Utilization

ZONAL LUMENS:

Zone	Lumens	% Fixture
0°-10°	13.1	0.4
10°-20°	50.9	1.6
20°-30°	103.4	3.3
30°-40°	252.5	8.2
40°-50°	564.8	18.2
50°-60°	794.2	25.7
60°-70°	933.9	30.2
70°-80°	337.2	10.9
80°-90°	45.1	1.5
90°-100°	0.0	0.0
100°-110°	0.0	0.0
110°-120°	0.0	0.0
120°-130°	0.0	0.0
130°-140°	0.0	0.0
140°-150°	0.0	0.0
150°-160°	0.0	0.0
160°-170°	0.0	0.0
170°-180°	0.0	0.0
0°-90°	3095.1	100.0
0°-180°	3095.1	100.0



REPORT NUMBER: P149358

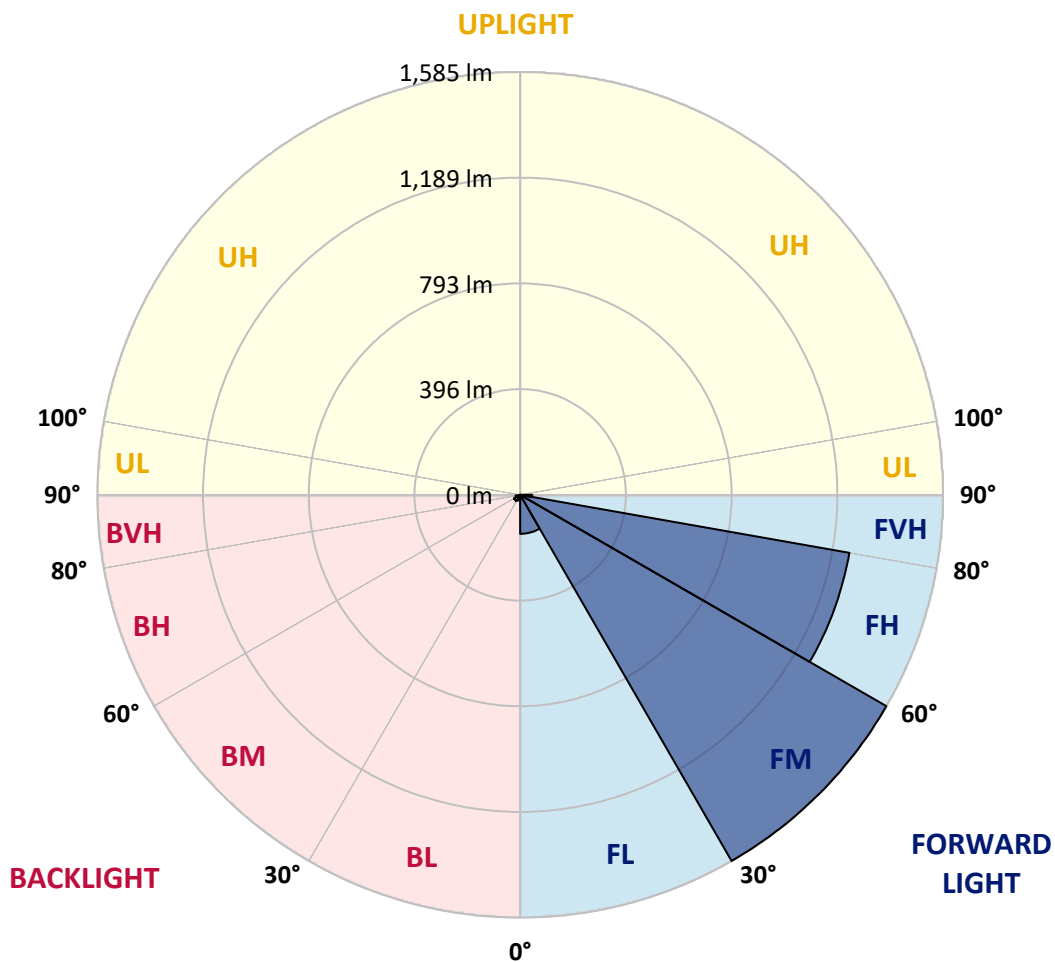
CATALOG NUMBER: VWM-E02-LED-E1-SL2-HSS-8030

LUMINAIRE CLASSIFICATION SYSTEM LUMEN TABLE AND BUG RATING:

Zone		Lumens	% Fixture	Zone Rating/Lumen Limit		
				B	U	G
FL	(0°-30°)	146.3	4.7			
FM	(30°-60°)	1585.0	51.2			
FH	(60°-80°)	1253.1	40.5			G1/1800
FVH	(80°-90°)	45.0	1.5			G1/100
BL	(0°-30°)	21.1	0.7	B0/110		
BM	(30°-60°)	26.5	0.9	B0/220		
BH	(60°-80°)	18.0	0.6	B0/110		G0/110
BVH	(80°-90°)	0.1	0.0			G0/10
UL	(90°-100°)	0.0	0.0		U0/0	
UH	(100°-180°)	0.0	0.0		U0/0	

BUG Rating: B0-U0-G1

Type II Short





REPORT NUMBER: P149358

CATALOG NUMBER: VWM-E02-LED-E1-SL2-HSS-8030

CANDELA DISTRIBUTION (FULL):

	0°	5°	15°	25°	35°	45°	55°	56°	57°	58°	59°
0°	118.7	118.7	118.7	118.7	118.7	118.7	118.7	118.7	118.7	118.7	118.7
2.5°	155.3	157.0	155.9	153.0	149.7	145.2	141.2	141.2	140.7	139.0	139.5
5°	203.7	204.2	202.0	195.2	189.1	179.5	168.8	167.7	166.5	164.9	164.3
7.5°	250.9	253.2	250.9	243.6	231.3	216.6	199.7	198.1	194.7	194.7	192.4
10°	299.3	299.3	297.1	288.6	277.4	256.6	235.2	232.4	228.4	227.3	223.9
12.5°	333.7	333.7	332.5	328.0	319.0	300.5	274.6	271.8	266.7	265.0	261.1
15°	347.2	347.2	347.7	351.7	352.2	343.8	316.8	314.5	309.5	305.0	303.3
17.5°	355.6	355.0	355.0	360.7	370.8	376.4	359.0	356.7	351.1	348.8	343.2
20°	374.2	373.0	369.7	369.7	379.2	398.9	398.9	398.4	392.2	390.5	387.7
22.5°	401.7	400.6	390.5	382.0	386.5	411.3	434.4	433.2	431.0	428.7	427.1
25°	446.8	442.8	425.4	400.6	396.7	423.1	461.4	464.2	465.9	465.9	467.0
27.5°	514.8	509.8	478.8	432.7	415.2	442.3	491.2	496.8	501.9	503.0	508.1
30°	609.4	600.4	555.9	488.4	448.4	470.4	535.1	541.3	548.6	550.8	558.7
32.5°	764.7	759.6	716.8	615.6	530.0	525.5	596.4	604.3	613.9	617.8	627.4
35°	1001.0	1002.1	967.2	876.1	757.9	696.0	706.1	712.9	716.3	728.1	733.1
37.5°	1161.3	1164.1	1172.0	1136.0	1051.6	988.6	909.3	916.6	899.1	900.8	901.4
40°	1249.1	1258.1	1304.2	1339.1	1332.4	1295.8	1232.2	1236.2	1203.5	1196.2	1160.8
42.5°	1307.6	1319.4	1393.1	1501.2	1556.3	1589.5	1574.9	1573.2	1547.9	1538.3	1508.5
45°	1344.2	1354.9	1447.7	1607.0	1734.1	1830.9	1870.8	1875.3	1854.0	1844.4	1819.6
47.5°	1342.5	1354.9	1454.5	1646.3	1833.7	1988.4	2101.0	2106.6	2119.5	2111.1	2112.8
50°	1268.2	1280.1	1380.2	1579.4	1804.5	2060.5	2266.4	2284.4	2305.2	2319.3	2326.0
52.5°	1178.2	1186.7	1275.6	1464.6	1679.5	2030.6	2364.3	2395.2	2426.2	2452.6	2471.2
55°	1145.0	1154.6	1224.3	1381.3	1579.4	1905.7	2409.9	2455.5	2499.3	2542.7	2578.1
57.5°	1162.5	1171.5	1221.5	1341.9	1519.7	1774.1	2422.8	2493.7	2565.7	2636.1	2705.8
60°	1226.6	1236.2	1278.9	1378.5	1504.0	1698.1	2372.2	2489.8	2609.6	2732.3	2847.6
62.5°	1201.3	1205.2	1268.2	1442.7	1616.5	1633.4	2188.2	2352.5	2535.3	2724.4	2910.6
63°	1177.1	1181.6	1245.7	1425.2	1650.8	1623.8	2131.4	2304.7	2497.7	2701.3	2903.9
65°	1067.4	1067.9	1116.9	1258.7	1612.6	1640.7	1878.2	2043.6	2265.3	2509.5	2765.5
67.5°	796.7	792.8	840.1	948.1	1266.0	1641.3	1612.0	1704.9	1859.0	2075.7	2305.2
70°	282.5	276.3	352.8	502.5	788.9	1342.5	1385.3	1391.5	1434.2	1551.3	1695.3
72.5°	91.7	93.4	112.5	184.0	363.5	903.6	1254.2	1235.0	1223.8	1223.2	1242.4
75°	36.6	37.1	45.0	81.6	163.2	435.5	1098.3	1109.0	1112.9	1118.6	1124.8
77.5°	17.4	19.1	25.3	45.6	81.0	215.5	786.0	876.6	928.4	968.3	992.5
80°	6.2	7.3	14.1	28.1	37.7	99.0	414.1	499.6	575.6	673.5	757.9
82.5°	0.0	0.0	2.8	19.7	20.8	39.9	169.9	199.2	227.9	295.4	379.2
85°	0.0	0.0	0.0	5.6	6.2	6.8	57.4	69.2	77.6	90.6	104.7
87.5°	0.0	0.0	0.0	0.0	0.0	0.0	0.6	1.7	3.4	8.4	12.9
90°	0.0	0.0	0.0	0.0	0.0	0.0	0.0	0.0	0.0	0.0	0.0



REPORT NUMBER: P149358
 CATALOG NUMBER: VWM-E02-LED-E1-SL2-HSS-8030

CANDELA DISTRIBUTION (continued):

	60°	61°	62°	64°	65°	66°	67°	68°	69°	70°	71°
0°	118.7	118.7	118.7	118.7	118.7	118.7	118.7	118.7	118.7	118.7	118.7
2.5°	138.4	137.9	137.9	136.7	136.2	135.0	134.5	132.8	132.2	132.2	132.2
5°	163.7	161.5	160.4	157.5	155.9	155.3	152.5	151.4	149.7	150.2	147.4
7.5°	191.9	187.9	186.2	182.3	181.2	177.2	176.1	173.3	171.6	168.2	167.1
10°	222.8	217.7	214.9	208.7	207.1	204.2	200.9	197.5	194.7	191.3	189.6
12.5°	258.3	253.8	251.5	243.1	239.1	235.2	230.7	226.2	221.7	218.9	214.9
15°	299.9	292.6	290.3	282.5	275.7	270.6	264.5	258.8	255.4	249.8	245.9
17.5°	341.0	333.7	332.0	320.2	312.8	309.5	302.7	295.4	289.2	283.6	277.4
20°	382.0	377.0	372.5	361.2	353.4	347.7	338.7	331.4	326.3	318.5	310.6
22.5°	423.1	418.1	414.7	402.9	395.6	387.7	379.8	371.9	364.6	355.0	346.0
25°	465.3	461.9	460.3	449.6	442.8	435.5	427.6	418.6	409.6	398.9	389.4
27.5°	509.2	510.3	507.0	504.7	497.4	492.3	479.9	473.8	467.0	454.1	442.3
30°	564.9	568.3	567.2	568.8	564.3	561.0	551.4	543.5	535.7	523.3	509.8
32.5°	635.2	639.7	642.0	648.2	645.9	644.8	642.0	630.7	625.1	603.7	598.1
35°	743.8	741.6	751.2	756.2	754.0	752.8	749.5	743.3	736.5	721.3	707.3
37.5°	885.1	887.3	890.7	880.6	873.8	873.2	863.1	856.9	847.4	830.5	813.6
40°	1143.9	1129.8	1114.1	1071.3	1052.7	1042.0	1012.2	1003.8	987.5	964.4	947.0
42.5°	1480.4	1466.3	1419.0	1347.6	1309.3	1256.4	1232.2	1202.4	1179.3	1141.6	1121.4
45°	1814.6	1774.1	1768.4	1685.2	1637.9	1568.1	1524.8	1474.7	1422.4	1372.9	1336.9
47.5°	2096.5	2087.5	2059.9	2009.3	1965.4	1906.9	1851.2	1774.1	1720.1	1649.7	1585.0
50°	2322.1	2321.5	2311.4	2282.2	2245.6	2198.3	2149.4	2084.1	2022.8	1936.7	1867.5
52.5°	2490.9	2499.9	2503.3	2494.3	2480.2	2438.6	2413.8	2359.2	2307.5	2234.3	2159.5
55°	2614.7	2647.9	2664.8	2683.9	2680.0	2665.3	2664.2	2628.8	2605.1	2547.2	2494.3
57.5°	2767.7	2822.3	2874.6	2967.5	2970.8	3003.5	3020.4	3037.2	3041.7	3018.7	3001.2
60°	2962.4	3073.8	3172.8	3367.0	3417.6	3497.5	3549.3	3605.5	3653.4	3657.3	3656.2
62.5°	3099.7	3271.3	3431.1	3719.2	3817.7	3909.9	3979.1	4033.7	4066.9	4100.7	4116.4
63°	3103.6	3291.6	3461.5	3758.6	3862.1	3949.9	4015.7	4066.3	4101.2	4121.5	4131.6
65°	3008.5	3236.4	3439.0	3734.9	3832.3	3920.6	3954.9	3988.1	4005.0	4012.9	3983.1
67.5°	2550.0	2772.8	3009.1	3340.0	3423.2	3529.0	3557.1	3574.0	3581.9	3580.2	3554.9
70°	1906.9	2093.7	2356.4	2734.5	2844.8	2948.3	3012.5	3040.1	3049.1	3046.2	3008.5
72.5°	1331.3	1441.0	1657.6	2078.5	2228.7	2361.5	2440.8	2481.9	2490.3	2473.5	2438.6
75°	1118.0	1123.6	1172.6	1402.7	1543.4	1685.2	1774.6	1800.5	1783.6	1732.4	1643.5
77.5°	998.2	1010.5	1010.5	1044.9	1072.4	1111.8	1120.3	1057.2	984.1	889.6	813.0
80°	837.2	880.6	910.9	936.3	939.1	931.2	910.4	874.9	818.7	746.7	666.8
82.5°	508.6	594.2	629.1	759.6	823.7	867.1	863.7	816.4	773.7	698.8	630.7
85°	128.3	138.4	150.2	195.2	218.9	267.3	297.6	311.7	316.8	290.9	263.3
87.5°	12.4	8.4	14.1	10.7	15.2	11.3	15.2	14.1	17.4	18.6	20.3
90°	0.0	0.0	0.0	0.0	0.0	0.0	0.0	0.0	0.0	0.0	0.0



REPORT NUMBER: P149358

CATALOG NUMBER: VWM-E02-LED-E1-SL2-HSS-8030

CANDELA DISTRIBUTION (continued):

	72°	73°	74°	75°	76°	77°	78°	79°	80°	81°	82°
0°	118.7	118.7	118.7	118.7	118.7	118.7	118.7	118.7	118.7	118.7	118.7
2.5°	131.1	130.5	130.0	129.4	128.8	128.3	127.2	127.2	126.0	125.5	124.9
5°	145.7	144.6	144.0	142.9	141.2	140.1	138.4	136.2	134.5	133.9	132.8
7.5°	164.3	161.5	160.4	158.7	156.4	153.0	150.8	149.1	146.3	144.6	141.2
10°	185.1	182.3	178.9	175.6	172.2	168.2	165.4	163.2	158.7	156.4	152.5
12.5°	211.6	206.5	202.6	198.1	193.6	189.1	185.7	178.9	175.0	169.9	166.5
15°	238.6	234.1	229.6	223.9	217.2	209.9	206.5	200.3	195.2	187.4	182.9
17.5°	271.2	262.8	256.0	249.3	243.1	236.3	229.6	220.0	212.7	205.9	196.9
20°	303.3	293.1	285.8	276.8	267.8	257.1	249.3	242.5	232.4	223.4	213.8
22.5°	337.6	327.5	315.7	306.7	294.3	285.8	275.1	263.9	253.8	241.9	230.1
25°	379.2	368.5	355.0	343.2	329.2	317.3	304.4	291.5	279.1	265.6	250.4
27.5°	430.4	419.2	404.6	390.5	371.9	357.3	344.9	327.5	311.7	294.8	277.4
30°	495.1	482.8	464.8	444.5	425.9	409.6	392.2	369.1	351.7	331.4	308.9
32.5°	579.5	564.9	540.7	521.6	498.5	477.1	452.9	429.9	405.1	378.7	352.8
35°	685.9	672.4	644.2	616.1	590.8	565.5	535.1	508.6	473.8	441.7	408.5
37.5°	796.2	772.0	746.1	715.7	684.2	653.8	616.7	580.1	540.2	505.3	463.6
40°	922.2	892.9	871.6	838.9	794.5	751.2	716.8	671.3	621.2	574.5	525.5
42.5°	1094.9	1062.3	1024.0	974.5	942.5	891.8	847.4	793.4	727.5	675.2	616.1
45°	1294.7	1250.2	1213.1	1165.3	1126.4	1063.4	1011.7	939.6	873.8	805.2	733.1
47.5°	1522.6	1467.4	1413.4	1366.1	1304.2	1242.4	1176.5	1100.0	1015.6	940.2	854.7
50°	1784.2	1706.0	1631.2	1570.4	1485.4	1414.0	1342.5	1256.4	1163.0	1076.4	979.0
52.5°	2075.1	1984.5	1885.5	1792.1	1693.6	1601.9	1515.8	1416.8	1312.7	1206.9	1098.3
55°	2426.2	2358.1	2241.6	2122.9	1991.3	1868.6	1757.8	1635.1	1508.5	1369.5	1255.3
57.5°	2975.9	2942.7	2845.4	2726.7	2555.0	2405.9	2218.0	2067.8	1884.4	1693.0	1545.6
60°	3720.9	3679.8	3625.2	3529.0	3392.8	3190.3	2983.2	2749.7	2470.6	2205.6	1954.1
62.5°	4118.1	4103.5	4059.0	3992.6	3865.5	3705.7	3496.9	3240.4	2925.3	2603.4	2282.7
63°	4129.9	4111.4	4073.1	4005.6	3893.6	3738.9	3534.1	3284.8	2976.5	2648.4	2321.0
65°	3970.1	3962.8	3924.0	3850.3	3773.8	3655.6	3496.9	3282.6	3023.7	2713.7	2387.9
67.5°	3521.1	3499.2	3439.5	3417.0	3363.6	3281.4	3160.5	3013.0	2827.9	2584.3	2303.0
70°	2978.2	2945.5	2870.7	2830.7	2765.5	2713.7	2640.0	2534.8	2420.6	2250.6	2040.8
72.5°	2402.6	2335.0	2266.4	2162.3	2071.2	1978.9	1897.3	1823.0	1697.5	1628.9	1469.7
75°	1560.3	1437.6	1320.0	1162.5	1020.7	895.2	773.1	711.2	582.4	530.0	455.2
77.5°	740.5	671.8	579.5	508.1	416.9	340.4	278.0	208.7	163.7	128.3	97.9
80°	597.5	539.6	483.9	419.2	350.5	279.6	214.4	160.4	113.7	78.8	55.7
82.5°	532.8	469.8	401.2	356.7	310.0	253.8	208.2	169.9	125.5	91.7	62.5
85°	207.1	174.4	134.5	109.7	85.5	70.3	63.6	43.9	34.3	27.0	20.8
87.5°	18.0	14.6	11.8	7.9	8.4	4.5	5.1	3.4	2.8	2.8	2.3
90°	0.0	0.0	0.0	0.0	0.0	0.0	0.0	0.0	0.0	0.0	0.0



REPORT NUMBER: P149358

CATALOG NUMBER: VWM-E02-LED-E1-SL2-HSS-8030

CANDELA DISTRIBUTION (continued):

	83°	84°	85°	86°	87°	88°	89°	90°	95°	105°	115°
0°	118.7	118.7	118.7	118.7	118.7	118.7	118.7	118.7	118.7	118.7	118.7
2.5°	124.3	123.8	123.2	122.1	122.1	121.0	120.4	119.8	117.0	110.8	105.8
5°	130.5	129.4	128.3	126.6	125.5	123.8	122.7	121.0	114.8	103.0	92.8
7.5°	139.5	137.3	135.6	132.2	130.5	128.3	126.6	123.8	113.7	95.7	81.6
10°	150.2	146.3	143.5	139.5	136.2	133.4	130.5	126.6	112.5	87.8	71.5
12.5°	163.2	158.7	153.0	148.5	144.0	140.1	136.2	131.1	110.8	81.0	63.6
15°	176.1	169.4	165.4	159.2	153.0	147.4	141.8	137.3	111.4	73.7	56.8
17.5°	190.7	184.0	175.6	168.8	162.0	154.7	148.0	139.0	108.6	68.1	51.8
20°	204.8	195.2	187.4	178.9	169.4	160.4	151.9	144.0	106.3	62.5	47.3
22.5°	220.0	208.7	198.6	187.9	176.1	166.0	155.9	145.7	102.4	57.4	43.3
25°	238.6	225.6	211.0	198.1	185.7	173.3	160.4	148.0	98.5	52.9	40.5
27.5°	261.1	244.2	229.6	213.2	195.8	180.1	166.0	152.5	94.5	49.5	37.7
30°	289.8	270.1	249.3	228.4	209.9	191.9	172.2	155.3	90.6	46.1	34.9
32.5°	328.0	303.3	278.0	253.8	229.0	205.9	185.1	163.2	88.3	43.3	32.1
35°	378.7	346.6	315.7	285.3	255.4	227.3	200.3	175.6	88.3	39.9	28.7
37.5°	426.5	389.4	350.0	312.3	276.8	244.2	212.1	182.3	83.8	37.1	25.9
40°	478.3	433.8	387.7	343.2	300.5	259.9	223.4	189.1	79.9	33.8	23.1
42.5°	557.6	501.3	441.1	389.4	338.2	288.1	242.5	202.0	74.8	30.4	20.3
45°	661.7	590.2	519.3	456.3	391.0	329.7	275.7	225.6	73.7	27.6	17.4
47.5°	773.1	688.7	605.4	525.0	448.4	377.0	312.3	252.1	73.7	24.8	15.2
50°	883.9	778.2	689.3	595.9	509.8	425.4	348.3	279.6	74.3	22.5	12.4
52.5°	984.1	871.0	771.4	663.4	568.3	470.4	386.5	306.7	73.1	19.7	10.1
55°	1123.1	990.3	874.9	755.7	644.2	534.0	438.9	347.2	73.7	17.4	8.4
57.5°	1379.1	1223.2	1084.2	927.8	799.5	657.2	541.8	430.4	80.5	14.6	6.2
60°	1746.5	1543.9	1348.7	1158.0	994.8	825.4	675.8	544.7	94.5	11.8	4.5
62.5°	1993.5	1728.5	1495.6	1285.1	1095.5	918.3	755.1	606.0	104.1	9.6	2.8
63°	2018.8	1744.8	1510.7	1293.6	1100.0	922.8	758.5	610.5	104.7	9.0	2.8
65°	2066.7	1772.9	1519.2	1295.2	1095.5	916.6	756.2	609.9	105.8	7.3	2.3
67.5°	2012.1	1729.6	1470.2	1246.9	1056.1	880.0	728.1	587.4	105.2	5.1	1.7
70°	1799.4	1565.3	1337.4	1129.3	956.0	796.7	662.8	535.7	96.8	3.4	1.1
72.5°	1321.1	1161.9	985.2	835.0	720.2	598.1	510.3	402.3	74.8	2.3	0.6
75°	391.6	356.7	299.9	264.5	233.5	193.0	171.6	133.9	38.3	1.1	0.0
77.5°	78.2	70.9	63.6	58.0	54.6	46.7	44.5	36.6	15.8	0.6	0.0
80°	41.1	33.8	28.7	25.3	21.9	18.0	15.2	12.4	2.8	0.0	0.0
82.5°	39.4	26.4	19.1	15.8	13.5	10.7	8.4	6.2	1.7	0.0	0.0
85°	14.6	11.3	8.4	6.8	5.6	5.1	3.9	3.4	0.0	0.0	0.0
87.5°	2.3	1.7	1.7	1.1	1.1	0.6	0.6	0.6	0.0	0.0	0.0
90°	0.0	0.0	0.0	0.0	0.0	0.0	0.0	0.0	0.0	0.0	0.0



REPORT NUMBER: P149358

CATALOG NUMBER: VWM-E02-LED-E1-SL2-HSS-8030

CANDELA DISTRIBUTION (continued):

	125°	135°	145°	155°	165°	175°	180°
0°	118.7	118.7	118.7	118.7	118.7	118.7	118.7
2.5°	100.7	96.2	94.0	91.2	91.2	90.6	91.7
5°	83.8	77.6	73.1	69.8	70.3	68.6	69.2
7.5°	70.9	64.7	60.8	58.5	58.0	57.4	57.4
10°	61.3	55.7	52.3	50.6	50.1	50.1	50.1
12.5°	54.6	49.0	46.1	45.0	45.0	44.5	44.5
15°	49.0	44.5	41.6	40.5	40.5	39.9	40.5
17.5°	44.5	39.9	37.7	36.6	36.6	36.0	36.0
20°	40.5	36.6	34.3	32.6	32.6	32.1	32.6
22.5°	37.1	33.2	30.4	29.3	28.7	28.1	28.7
25°	33.8	29.8	27.0	25.3	24.8	24.8	24.2
27.5°	30.9	27.0	23.6	21.9	21.4	21.4	20.8
30°	28.1	23.6	20.3	18.6	18.0	18.0	18.0
32.5°	25.3	20.3	17.4	15.8	15.2	15.2	15.2
35°	22.5	17.4	14.6	12.9	12.4	12.4	12.4
37.5°	19.1	14.6	11.3	10.1	9.6	9.0	9.0
40°	16.3	11.3	8.4	7.3	6.2	6.2	6.2
42.5°	13.5	9.0	6.2	4.5	3.9	3.4	3.9
45°	11.3	6.8	3.9	2.3	1.7	1.7	1.7
47.5°	9.0	4.5	1.7	0.6	0.6	0.6	0.6
50°	6.8	2.8	0.6	0.0	0.0	0.6	0.6
52.5°	5.1	1.7	0.0	0.0	0.0	0.0	0.0
55°	2.8	0.6	0.0	0.0	0.0	0.0	0.0
57.5°	1.7	0.0	0.0	0.0	0.0	0.0	0.0
60°	1.1	0.0	0.0	0.0	0.0	0.0	0.0
62.5°	0.6	0.0	0.0	0.0	0.0	0.0	0.0
63°	0.6	0.0	0.0	0.0	0.0	0.0	0.0
65°	0.6	0.0	0.0	0.0	0.0	0.0	0.0
67.5°	0.0	0.0	0.0	0.0	0.0	0.0	0.0
70°	0.0	0.0	0.0	0.0	0.0	0.0	0.0
72.5°	0.0	0.0	0.0	0.0	0.0	0.0	0.0
75°	0.0	0.0	0.0	0.0	0.0	0.0	0.0
77.5°	0.0	0.0	0.0	0.0	0.0	0.0	0.0
80°	0.0	0.0	0.0	0.0	0.0	0.0	0.0
82.5°	0.0	0.0	0.0	0.0	0.0	0.0	0.0
85°	0.0	0.0	0.0	0.0	0.0	0.0	0.0
87.5°	0.0	0.0	0.0	0.0	0.0	0.0	0.0
90°	0.0	0.0	0.0	0.0	0.0	0.0	0.0

(END OF REPORT)